



TurboTwist Racer

BUILDING INSTRUCTIONS



Legend

* Refer back to these identifying images and descriptions of the included pieces as you follow the instructions.

BLAZE RACER 	 ACTIVATION BUTTON	BACK LIGHTS 	USB CHARGER [1] LATCH RECHARGEABLE BATTERY [1] HITCH
FLEX TRACK 	FLEX TRACK [108 LINKS] 	TRACK CONNECTION TAB TRACK CONNECTION SLOT	
LOOP 	LOOP TRACK [5] 	LOOP CONNECTION TAB LOOP CONNECTION SLOT	
	LOOP BASE [2] 	BASE CONNECTION TAB BASE CONNECTION SLOT	
CAR MOUNT 	CAR MOUNT STEM	CAR MOUNT CONNECTION TAB CAR MOUNT CONNECTION SLOT	

REQUIRED FOR ASSEMBLY:

Important note before you begin: Adult assembly is required.

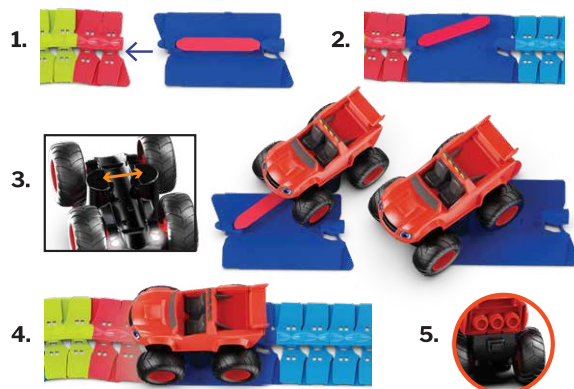
A Philips head screwdriver is needed but not included; a smaller screwdriver is recommended.

A rechargeable battery is included. Please see the instructions for charging and re-charging the batteries (Page 4).

Car Mount

Your Blaze Racer is a Monster Machine with big monster truck wheels. It has unique racing action as its tires grab the track. To make sure the Blaze Racer is snugly hugging the track for continuous racing action, you must first mount the vehicle onto the track as follows:

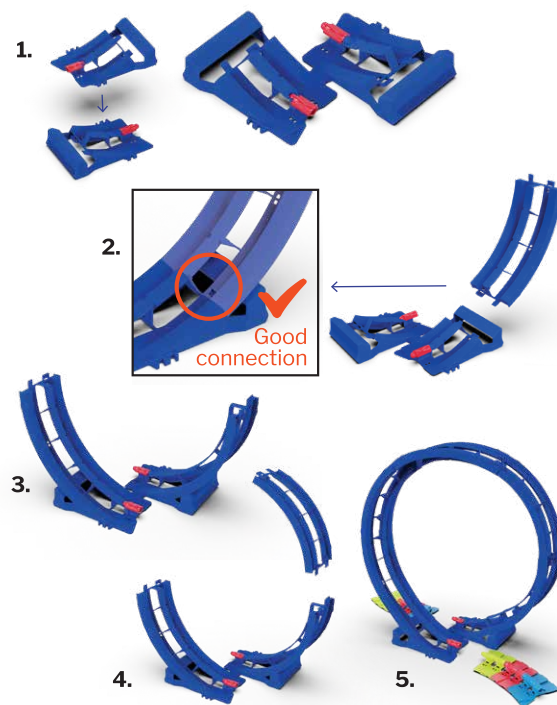
1. Connect the Car Mount to the Flex Track by inserting the Connection-Tab into the Connection-Slot at the beginning of a section of connected Flex Track links.
2. Tilt the red Car Mount Stem to the side.
3. Slide the underside of the Blaze Racer over the Car Mount Stem so that it inserts in-between the two half-circle shapes.
4. Slide the car so that the front end of the car is now aligned with the Car Mount Connection Tab.
5. Click the activation button on the back of the Blaze Racer. The Blaze Racer will move forward as it hugs the track.



Loop Assembly

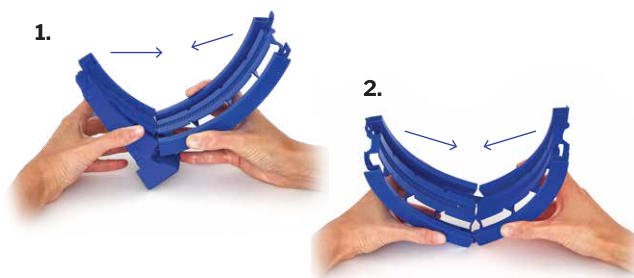
NOTE: For each of the steps below, remember to apply gentle pressure as forced or hard pressure may damage the toy.

1. Take the two base pieces and attach them together in side-by-side position as shown. The upward ramps on each base must be facing in opposite directions. Fit the connector tabs into the connector slots until you hear a “click” sound. This means you have snapped the base pieces together correctly.
2. Attach the Loop Track pieces to the base pieces. First, attach a piece of Loop Track on one base side. Pick a base piece and insert the connector tab of a piece of loop track into its slots. Listen for a “click” to confirm the pieces have been snapped together correctly.
3. Attach a piece of Loop Track to the other base side following the same instructions above.
4. Go back to the first base piece and start adding additional pieces of Loop Tracks one on top of the other. Each time, listen for the “click sound” to ensure the pieces have been snapped together correctly.
5. Connect the last Loop Track to the loop track on the opposite side to close the loop.



Loop Disassembly

1. To remove the base pieces, hold the base side in one hand and the connected loop track piece in the other hand. Gently pull the pieces inwards and away from each other to disconnect. Applying too much force or pressure can damage the toy.
2. To disassemble the loop pieces, gently bend the pieces inward until they release apart from each other. Applying too much force or pressure can damage the toy. You will hear a click sound as you disassemble the pieces.



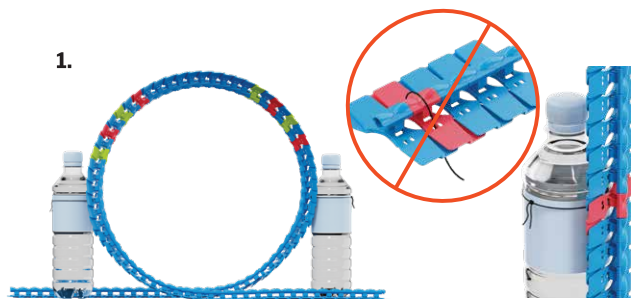
Endless Possibilities... Tips & Tricks

You can use different props to make your race track more exciting!

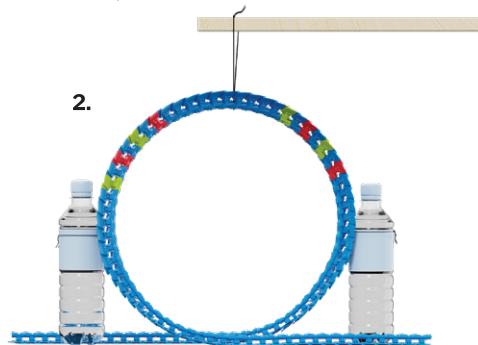
For a few cool tricks grab the following items (not included): String, two full water bottles, small chair/stool, box, pillow, ruler.

1. Create a loop shape out of the tracks, then use the string to tie both edges to a full bottle of water.

WARNING: When you tie a string to the track make sure not to run the thread on top of the middle of the track where the car runs. The thread may tangle in between the wheels.



2. Place a ruler on top of a chair or box higher than the loop, place something heavy on top to make sure it's stable. Then tie the top of the loop to the ruler to hold a perfect circular shape.

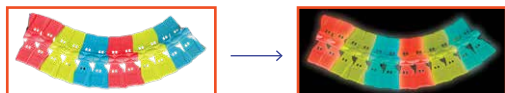


3. Create elevations and slopes using different items in your room. Use your imagination!

* **Note:** The car is able to climb and descent very steep slopes, however the track needs to be supported to create resistance.



Make it Glow!

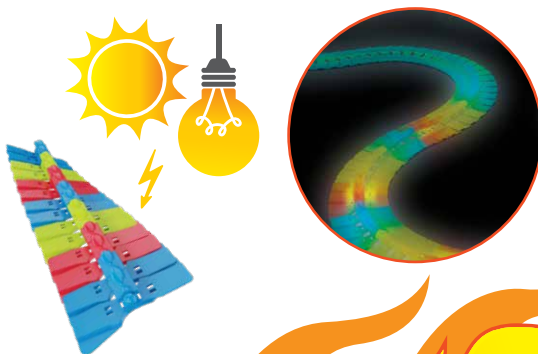


The entire Flex Track glows in the dark!

For a long-lasting glow-in-the-dark effect, expose the Flex Track pieces to light for as long as possible.

This can include indoor lights or natural light outdoors.

Long exposure to light extends the glowing feature!



Blaze Racer Battery Installation & Activation Directions

Recharging the Battery

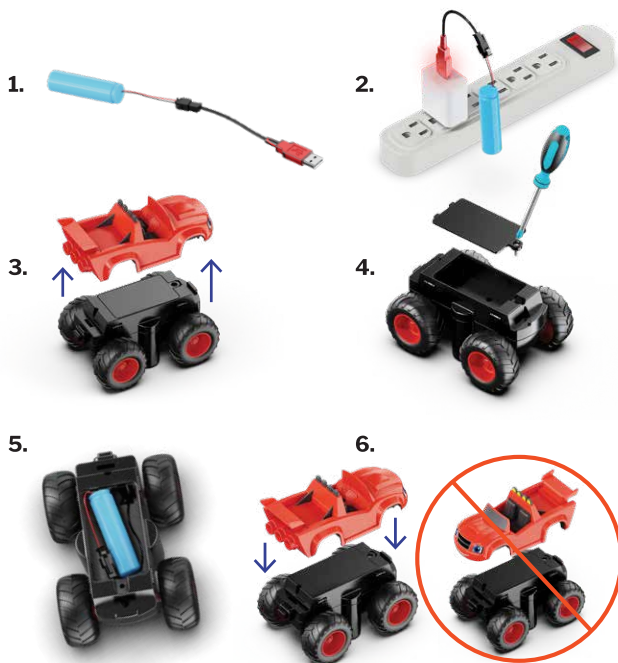
1. Insert the battery hitch into the USB charger latch.
2. Connect the USB to a power source, such as a power adapter/brick, or to another device with a USB port such as a laptop.

Note: A red light will indicate the battery is being charged.

3. Gently pull up the top (red) piece of the car to remove the cover and reveal the battery compartment.
4. Unscrew and remove the lid of the battery compartment.
5. Insert the battery cord's hitch into the battery compartment's latch.
6. Screw the battery cover closed, then reattach the car's top piece in the direction shown. Make sure the activation button is aligned with the back side of Blaze.

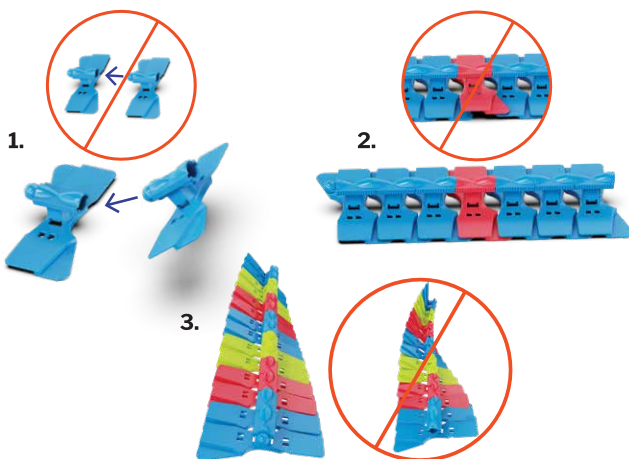


TANGLE WARNING: Keep wheels away from hair, loose clothing & jewelry.



Track Assembly Do's and Don'ts

1. When connecting the Flex Track links together be sure to tilt the link so that the connection tab meets the connection slot at an angle.
2. Each connected link should sit on top of the previously connected link. Please follow this pattern throughout the entire track assembly process to ensure that the links remain flush with each other.
3. When connecting the Flex Track make sure to keep the pieces straight. Do not let the pieces spiral. This will ensure a smooth track surface for racing.



These instructions are designed to provide clear direction for the use and/or assembly of this product. We appreciate your feedback and we're here to help. If any part seems unclear or if the directions do not achieve the desired results, please let us know. Before leaving any product complaints or bad reviews, please contact our customer service team at - info@jitterygit.com and we'll do all we can to resolve your issue.

WWW.JITTERYGIT.COM | INFO@JITTERYGIT.COM | [f](https://www.facebook.com/jitterygit) [i](https://www.instagram.com/jitterygit) @JITTERYGIT

INSTRUCTIONS SHEET IS PART OF THE SET
AND MUST REMAIN WITH IT AT ALL TIME

ITEM: **BLAZE TURBOTWIST 108 PCS SET**

Comply to ASTM F963 & CPSIA Toy Safety Standards
August 2024, Batch# BH20240805
SHANTOU, CHINA

MADE IN CHINA



15061068010006

Imported by: **JitteryGit**

Address:
4970 SW 52st Ave., Ste 325
Davie, FL 33314-5531