

## HOW TO INFLATE YOUR DADDY SHARK PLUSH TOY

### 1. REMOVE THE AIR PLUG

Using the white key provided, gently place the teeth of the key around the air plug and pull it out to open the valve.



KEY



### 2. INSERT THE AIR PUMP

After removing the air plug, securely attach the air pump nozzle into the valve opening.



AIR  
PUMP



### 3. INFLATE THE DADDY SHARK

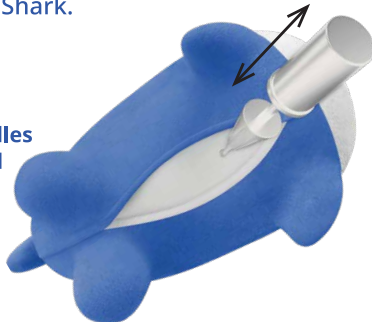
Before inflating, **(A)** ensure the rubber handles are aligned and not twisted inside the plush cover. Use the air pump to inflate your Daddy Shark. As you inflate, ensure the cover is smooth and the shark's shape is properly formed. **(B)** Make sure the shark's legs, top fin, back fin and the two handles are aligned inside the plush cover. You may need to gently reposition them as you inflate to ensure a perfectly shaped Daddy Shark.



**(A)** Ensure the rubber handles are aligned and not twisted inside the plush cover



**(B)** Make sure the fins and limbs are aligned inside the plush cover



### 4. ADJUSTING INFLATION FOR COMFORT AND BALANCE

The Daddy Shark can be inflated to different levels to suit your child's needs. You can fully inflate it for a firmer surface, or you can inflate it slightly less if your child can barely touch the floor with their feet. If you want to encourage your child to work on their balance, inflate it more, so they can only reach the floor with their tiptoes.

\* Once inflated, turn the ball over and press down on the back of the shark, where your child would sit.

If the shark is fully inflated, you'll feel resistance when you press.

If it's not fully inflated, you'll be able to push it down slightly.

This allows you to adjust the ball's firmness to help younger children reach the floor more easily.



### 5. SEAL THE AIR PLUG

Once fully inflated, quickly remove the air pump and push the cap of the air plug closed to seal it securely and prevent deflation.



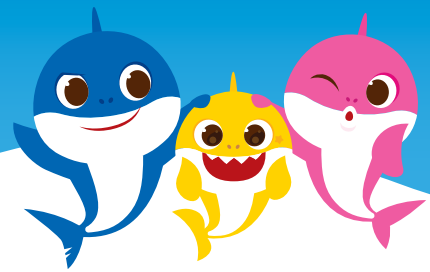
AIR  
PLUG



### 6. CLOSE THE STRAPS AND PLAY!

Finally, close the adhesive straps and get ready for some fin-tastic fun with your new Daddy Shark plush!





## ACTIVATING THE BABY SHARK THEME SONG

Batteries are included, to activate them follow these simple steps:

1. Carefully pull out the speaker from its compartment inside the plush cover, being gentle with the plush to avoid damaging it.
2. Flip the speaker over to reveal the battery compartment and remove the white strip of insulating film from the battery compartment.
3. Before reinserting the speaker into the plush cover, test it by pressing the button to ensure the new batteries are working.
4. When the speaker is ready, gently stretch the plush opening with your fingers to align the speaker with the hole inside the rubber core, then carefully place it back, ensuring the seam hugs the speaker without folding inward.
5. To play the Baby Shark theme song, simply press the speaker's button located on top of the Shark. The lights on the speaker will illuminate as the song plays. To stop the music and turn off the lights, press the button again.

### WHEN IT'S TIME TO REPLACE THE BATTERIES, FOLLOW THESE SIMPLE STEPS:

6. Carefully remove the speaker from inside the plush toy. Be gentle with the fabric to avoid damage. Turn the speaker over to reveal the battery compartment. Use a small screwdriver to remove the screw holding the cover in place. Then, gently lift the lid using the side clip.
7. Remove the old batteries and replace them with three new LR44 batteries. Make sure to align the batteries according to the markings (+ and -).
8. Screw back the lid of the battery compartment securely. Then, follow steps 3-4 to place the speaker back into the toy.

#### [2.] REMOVE STRIP FROM BATTERIES



#### [4.] RIGHT WAY



#### WRONG WAY



#### [7.] ALIGN + AND -



## WARNING

### SUPERVISION OF AN ADULT IS REQUIRED

**ADULT SUPERVISION IS REQUIRED** AT ALL TIMES WHILE THE TOY IS IN USE.

**ENSURE THE TOY IS USED IN A SAFE, SUPERVISED AREA**, AWAY FROM STAIRS, ROADS OR ANY OTHER POTENTIAL HAZARDS. KEEP THE TOY AWAY FROM SHARP OBJECTS TO AVOID DAMAGE.

**ASSEMBLY SHOULD BE DONE BY A RESPONSIBLE ADULT** TO ENSURE THE TOY IS PROPERLY INFLATED AND SECURE.

**KEEP AT ROOM TEMPERATURE BEFORE INFLATING.** AVOID DIRECT SUNLIGHT AND HEAT TO PREVENT DAMAGE.

**MAXIMUM WEIGHT LIMIT:** 44 LB (20 KG).

### PLUSH LAUNDRY GUIDE

REMOVE THE SPEAKER, THEN REMOVE THE PLUSH COVER. HAND WASH THE PLUSH IN WARM WATER (UNDER 86°F), HANG TO DRY.

**\* KEEP SPEAKER AWAY FROM WATER.**



HAND WASH  
<86°F



DO NOT  
DRY



DO NOT  
DRY CLEAN



DO NOT  
BLEACH



DO NOT  
IRON

These instructions are designed to provide clear direction for the use and/or assembly of this product. We appreciate your feedback and we're here to help. If any part seems unclear or if the directions do not achieve the desired results, please let us know. Before leaving any product complaints or bad reviews, please contact our customer service team at - info@jitteryguit.com and we'll do all we can to resolve your issue.

WWW.JITTERYGUIT.COM | INFO@JITTERYGUIT.COM | @JITTERYGUIT

INSTRUCTIONS SHEET IS PART OF THE SET AND MUST REMAIN WITH IT AT ALL TIME

ITEM: **BABY SHARK BOUNCE 'N' PLAY - DADDY SHARK**  
Comply to ASTM F963 & CPSIA Toy Safety Standards  
June, 2025, Batch #YW20250605,  
Yiwu, CHINA



8 60009 32957 7

Imported by: **JitteryGuit**  
Address: 4970 SW 52nd Ave, Ste 325  
Davie, FL 33314-5531

**JitteryGuit**